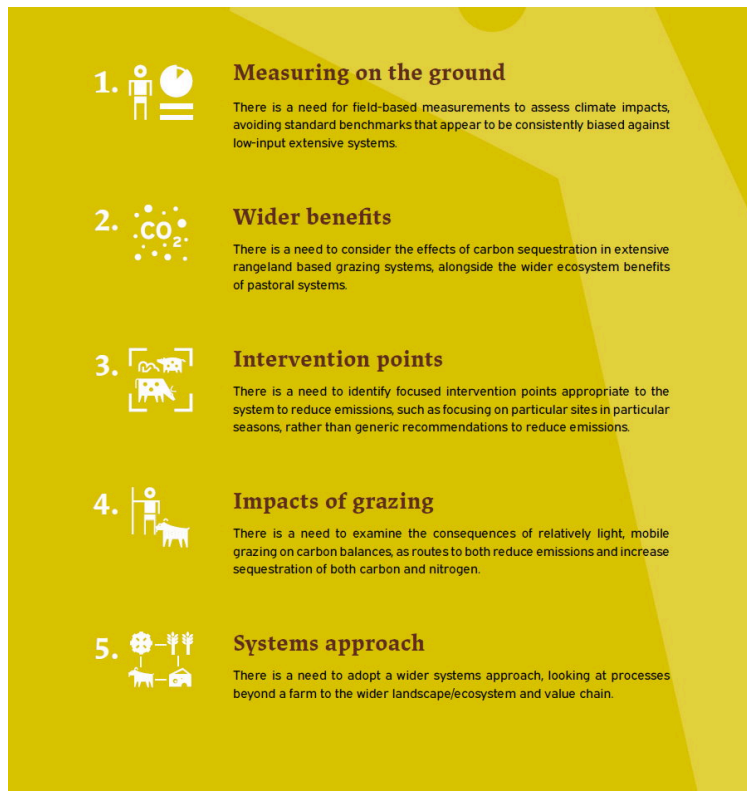


Pastoralism systems approach

Published 25 Oct 2022



Republished from: <https://pastres.org/livestock-report/>

A report and set of briefings warns that the dominant picture of livestock's impacts on climate change has been distorted by faulty assumptions that focus on intensive, industrial farming in rich countries. Millions of people worldwide who depend on extensive livestock production, with relatively lower climate impacts, are being ignored by debates on the future of food.

Resource type

[Infographic](#)